

Immeuble **GRANDSON 7-13**
Commune **YVERDON-LES-BAINS**

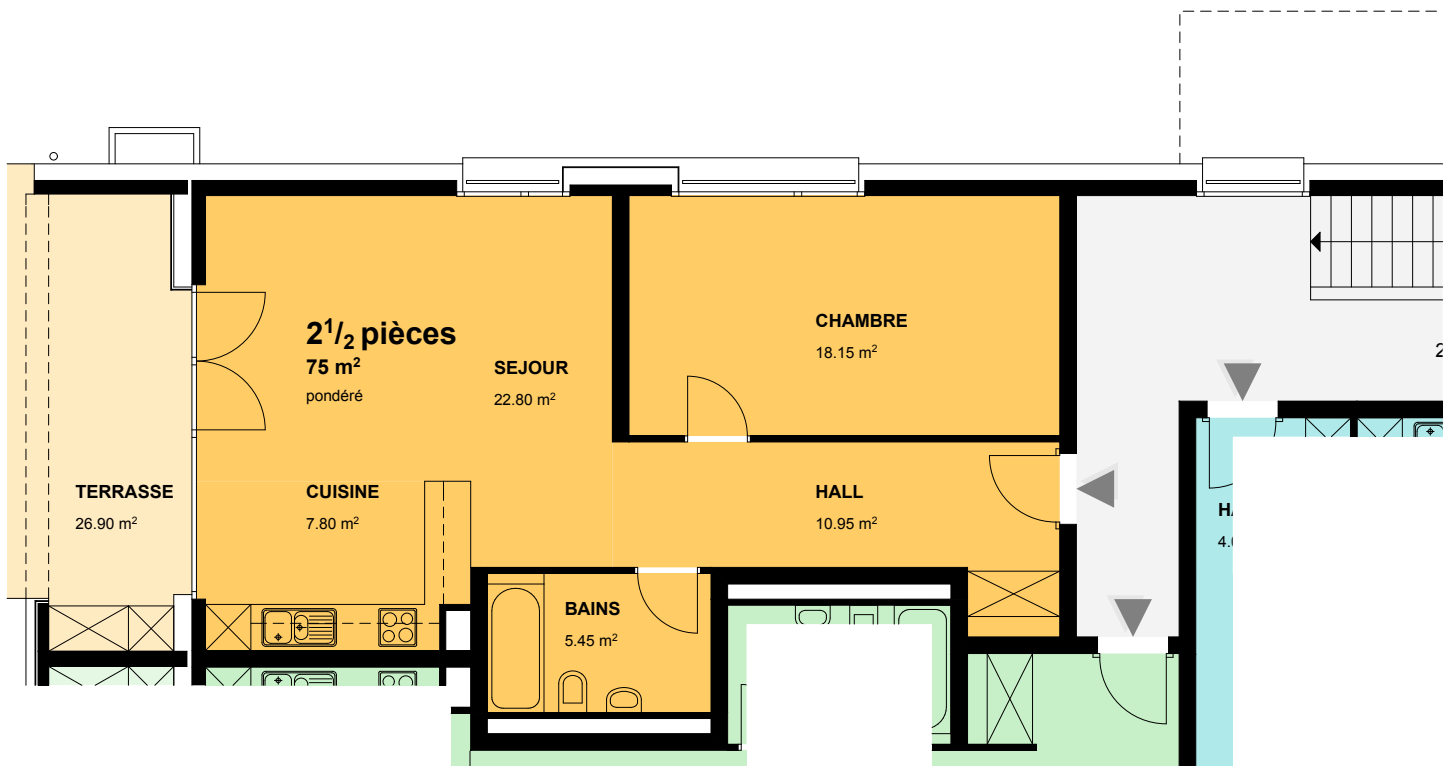
District **JURA - NORD VD**
Parcelle **2417 - 2419**

8790

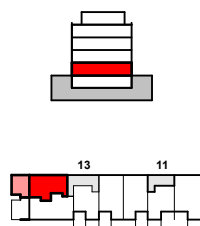
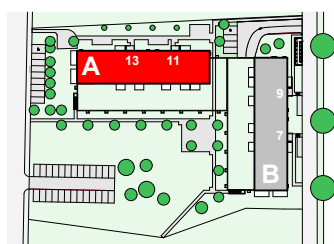
2 p.^{1/2} - Rez-de-chaussée

Entrée n°: 13

Appart. n°: 4



sous réserve de modifications



Surfaces et volumes

SIA	65.15 m ²
Terrasse	26.95 m ²
Pondéré	75 m²
Chauffé	156 m ³
USPI	67.85 m ²



Immeuble **GRANDSON 7-13**
Commune **YVERDON-LES-BAINS**

District **JURA - NORD VD**
Parcelle **2417 - 2419**

8790

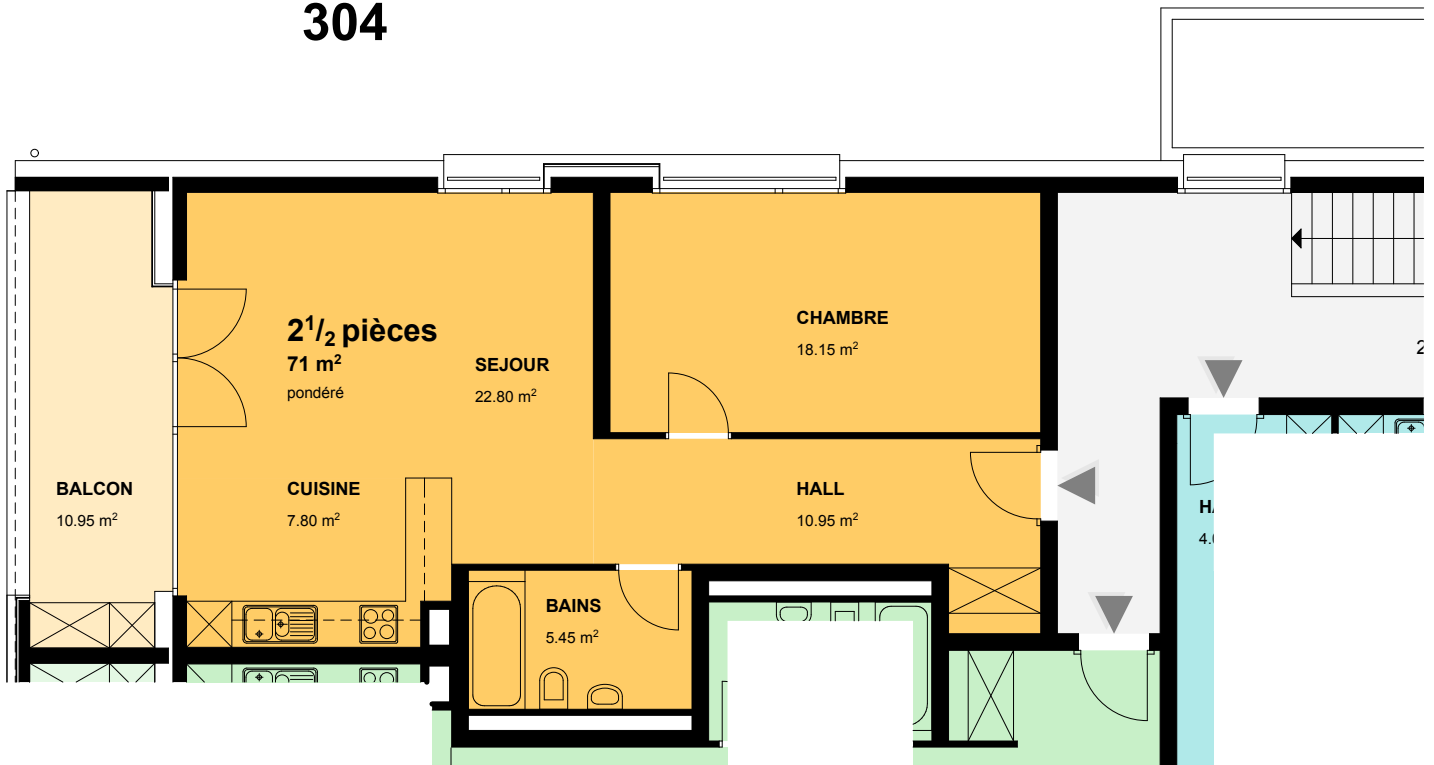
2 p.^{1/2} - Etages 1,2 et 3

Entrée n°: 13

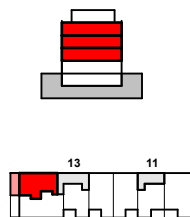
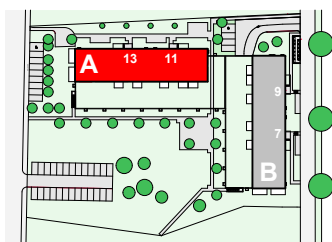
Appart. n°: 104

204

304



sous réserve de modifications



Surfaces et volumes

SIA	65.15 m ²
Balcon	10.95 m ²
Pondéré	71 m²
Chauffé	156 m ³
USPI	67.85 m ²



Immeuble **GRANDSON 7-13**
Commune **YVERDON-LES-BAINS**

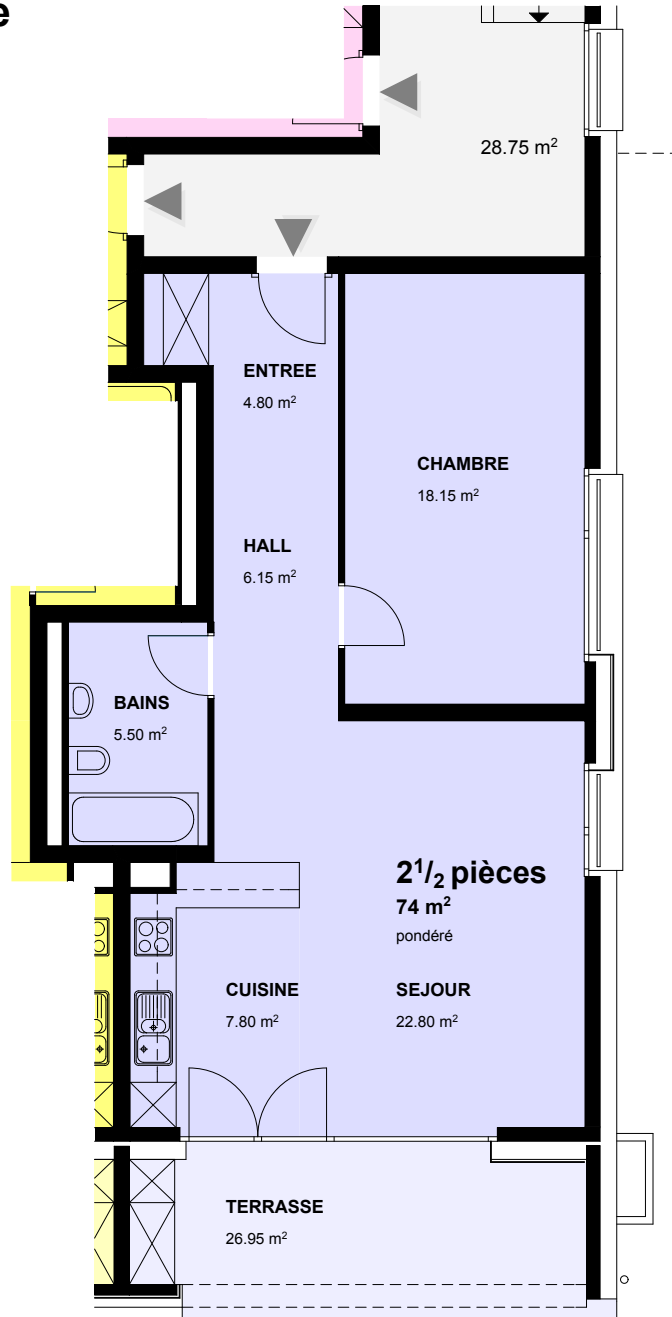
District **JURA - NORD VD**
Parcelle **2417 - 2419**

8790

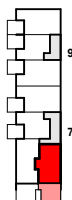
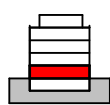
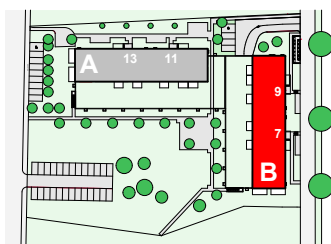
2 p.^{1/2} - Rez-de-chaussée

Entrée n°: 7

Appart. n°: 1



sous réserve de modifications



Surfaces et volumes

SIA	65.20 m ²
Terrasse	26.95 m ²
Pondéré	74 m²
Chauffé	156 m ³
USPI	67.85 m ²



Immeuble **GRANDSON 7-13**
Commune **YVERDON-LES-BAINS**

District **JURA - NORD VD**
Parcelle **2417 - 2419**

8790

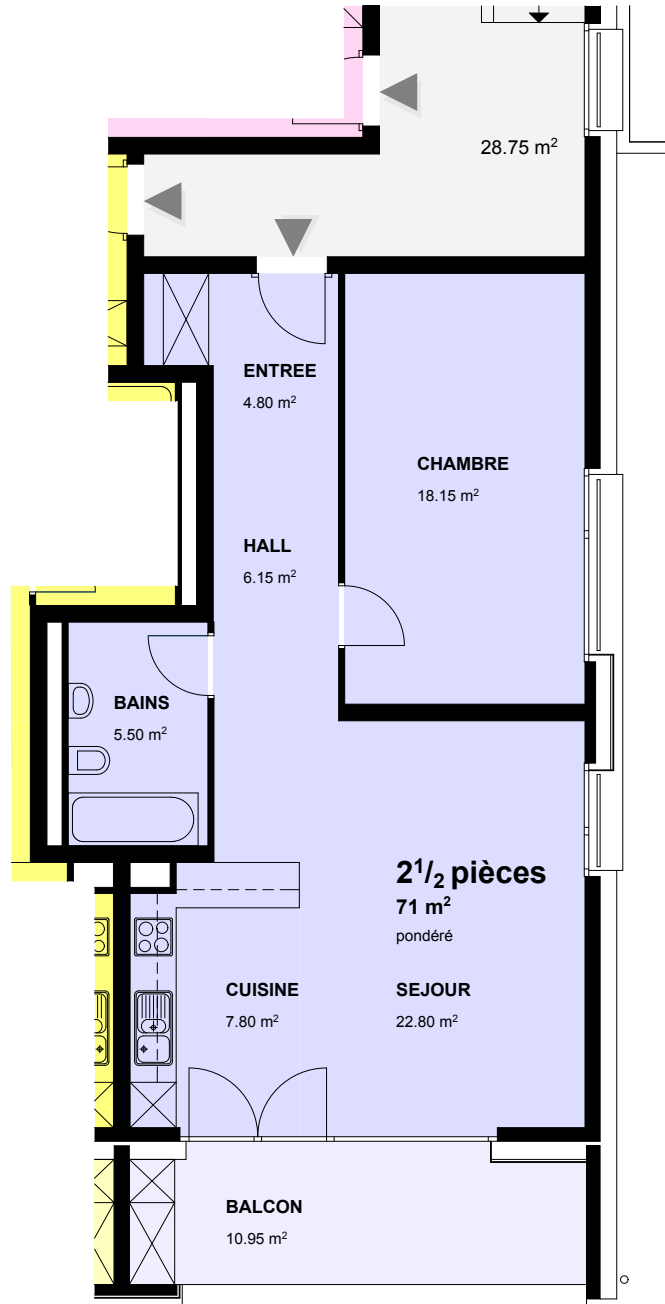
2 p.^{1/2} - Etages 1,2 et 3

Entrée n°: 7

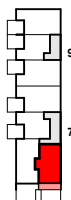
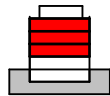
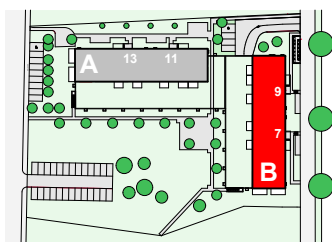
Appart. n°: 101

201

301



sous réserve de modifications



Surfaces et volumes

SIA	65.20 m ²
Balcon	10.95 m ²
Pondéré	71 m²
Chauffé	156 m ³
USPI	67.85 m ²

