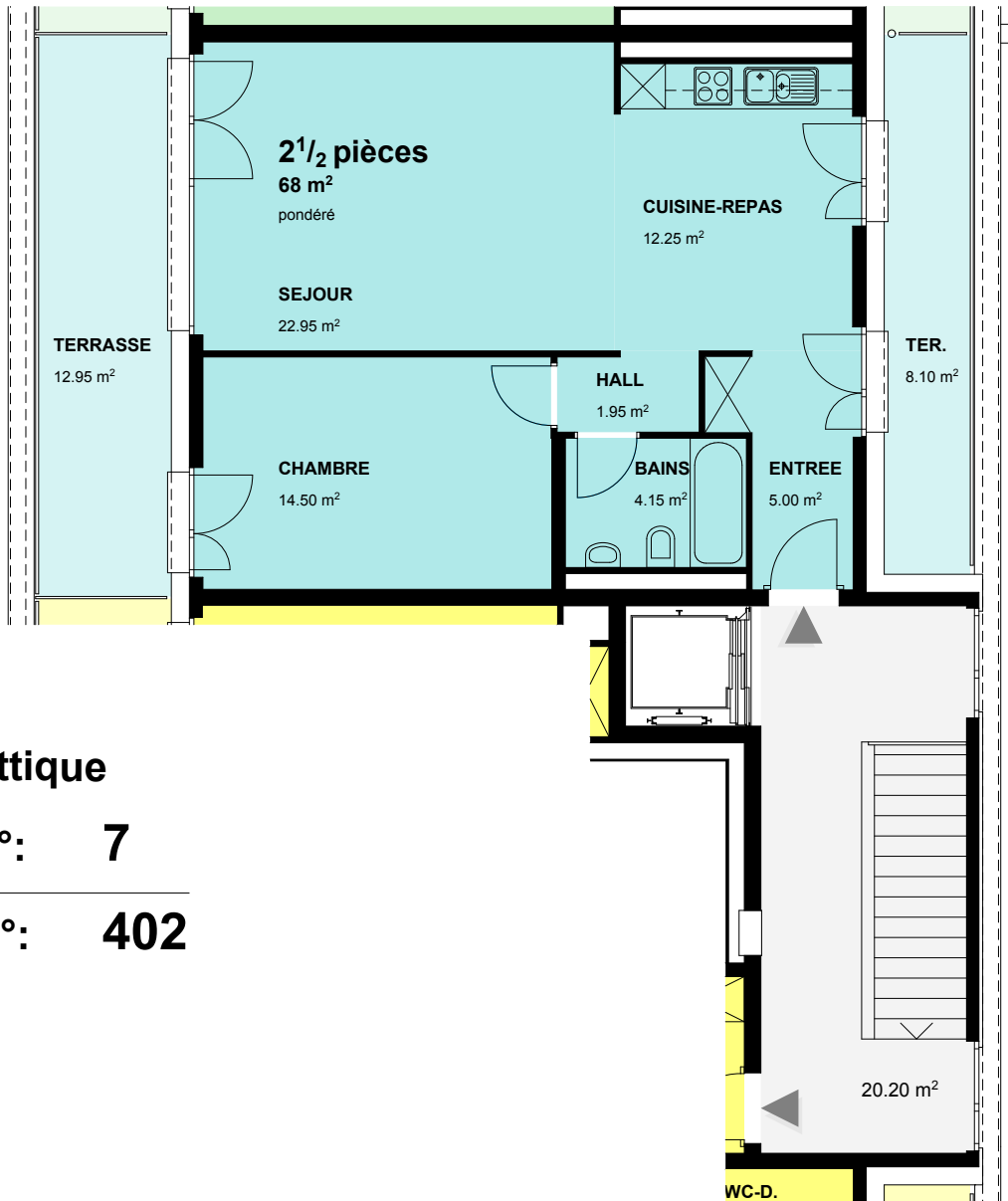


Immeuble **GRANDSON 7-13**
Commune **YVERDON-LES-BAINS**

District **JURA - NORD VD**
Parcelle **2417 - 2419**

8790

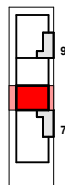
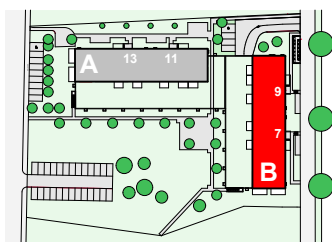


2 p.^{1/2} - Attique

Entrée n°: 7

Appart. n°: 402

sous réserve de modifications



Surfaces et volumes

SIA	60.80 m ²
Terrasse	21.05 m ²
Pondéré	68 m²
Chauffé	146 m ³
USPI	63.50 m ²



Immeuble **GRANDSON 7-13**
Commune **YVERDON-LES-BAINS**

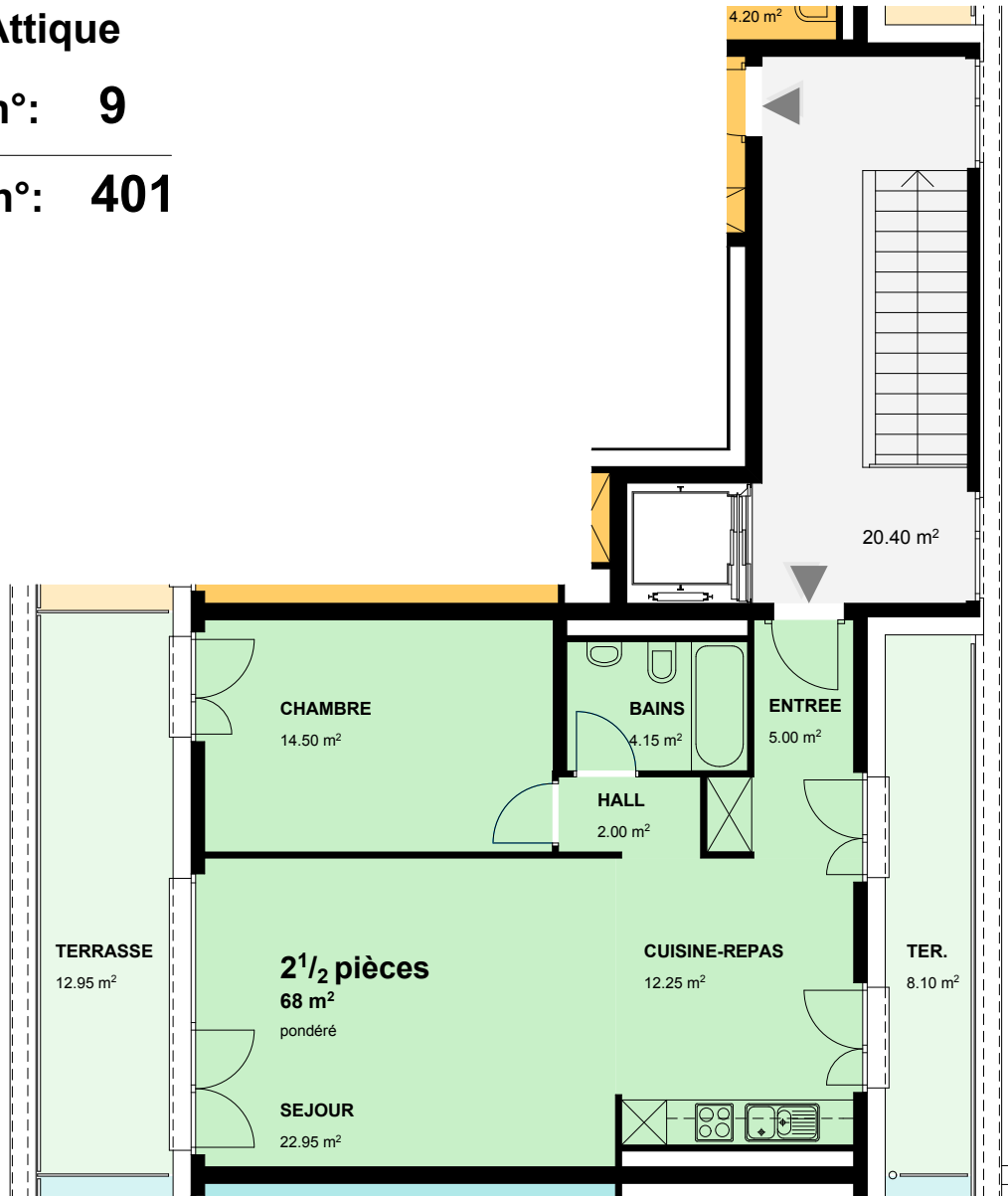
District **JURA - NORD VD**
Parcelle **2417 - 2419**

8790

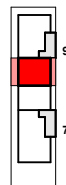
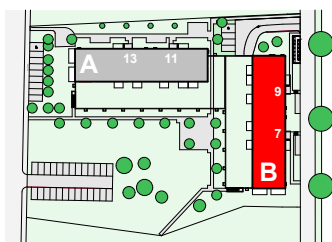
2 p.^{1/2} - Attique

Entrée n°: 9

Appart. n°: 401



sous réserve de modifications



Surfaces et volumes

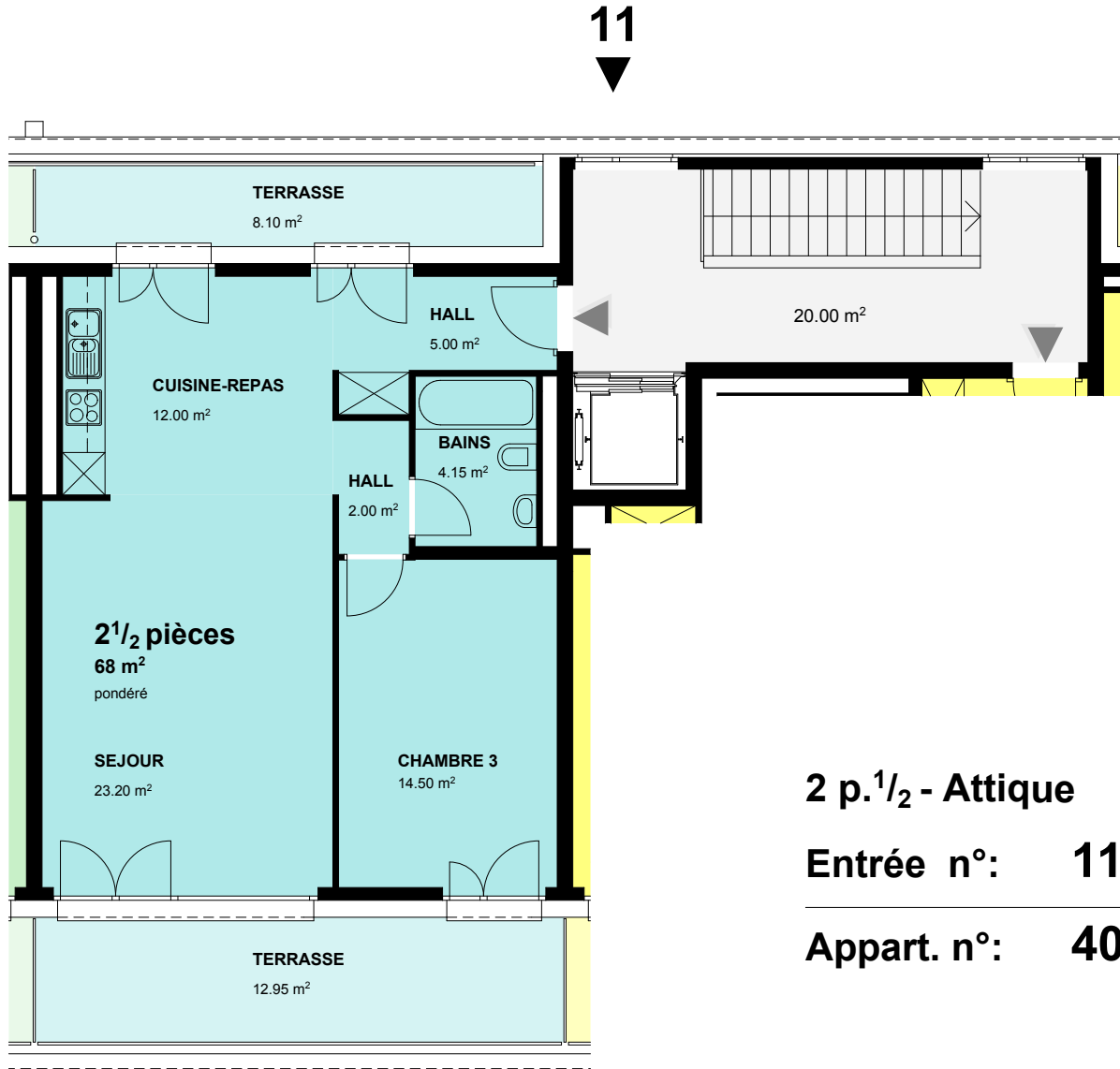
SIA	60.85 m ²
Terrasse	21.05 m ²
Pondéré	68 m²
Chauffé	146 m ³
USPI	63.50 m ²



Immeuble **GRANDSON 7-13**
Commune **YVERDON-LES-BAINS**

District **JURA - NORD VD**
Parcelle **2417 - 2419**

8790

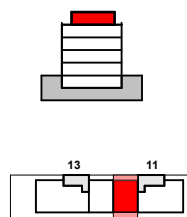
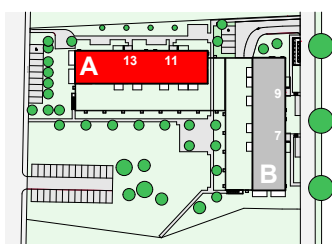


2 p.^{1/2} - Attique

Entrée n°: 11

Appart. n°: 402

sous réserve de modifications



Surfaces et volumes

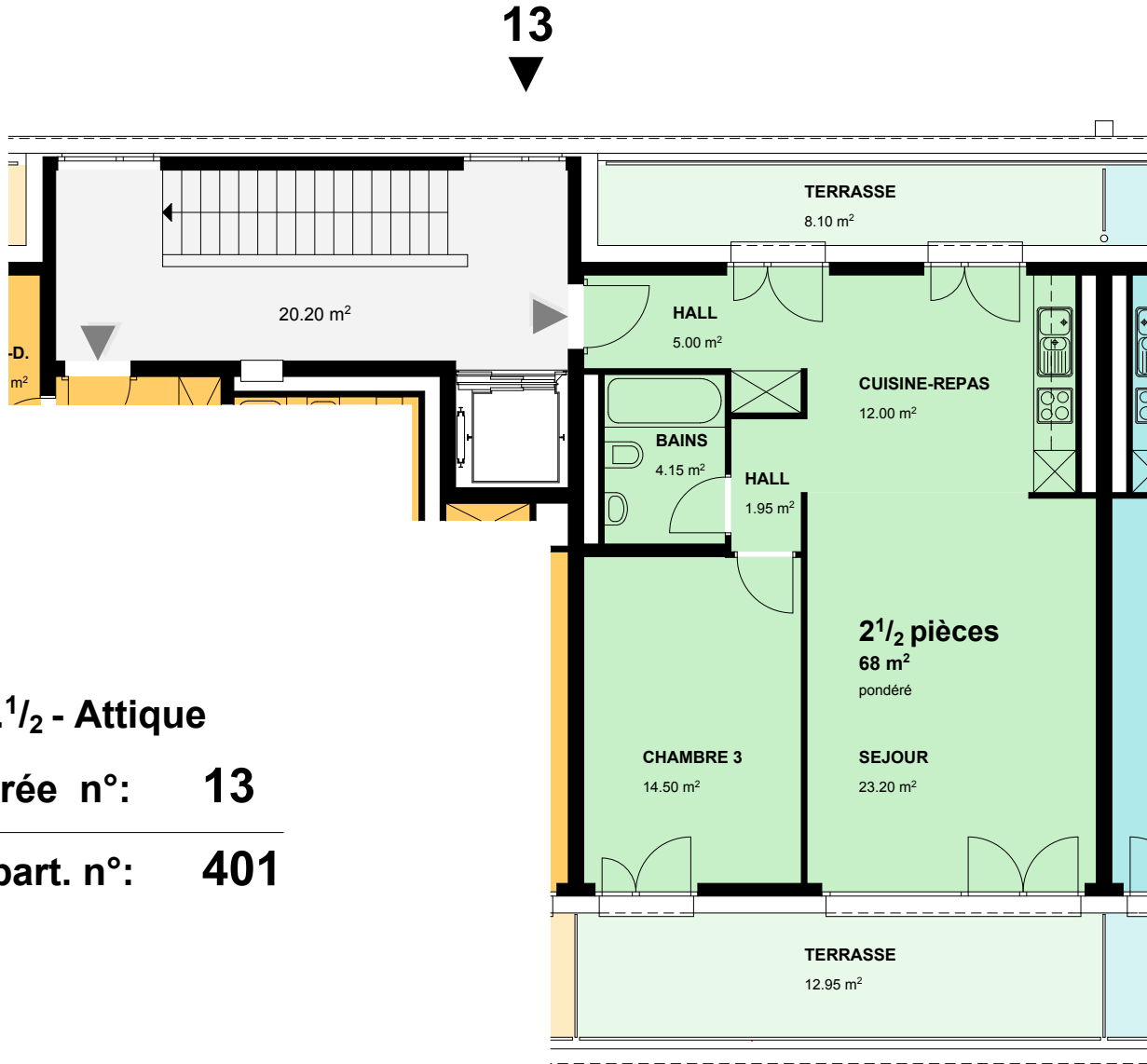
SIA	60.85 m ²
Terrasse	21.05 m ²
Pondéré	68 m²
Chauffé	146 m ³
USPI	63.50 m ²



Immeuble **GRANDSON 7-13**
Commune **YVERDON-LES-BAINS**

District **JURA - NORD VD**
Parcelle **2417 - 2419**

8790

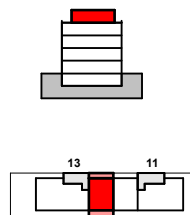
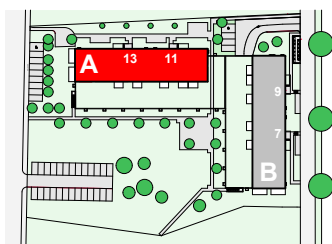


2 p.^{1/2} - Attique

Entrée n°: 13

Appart. n°: 401

sous réserve de modifications



Surfaces et volumes

SIA	60.80 m ²
Terrasses	21.05 m ²
Pondéré	68 m²
Chauffé	146 m ³
USPI	63.50 m ²

