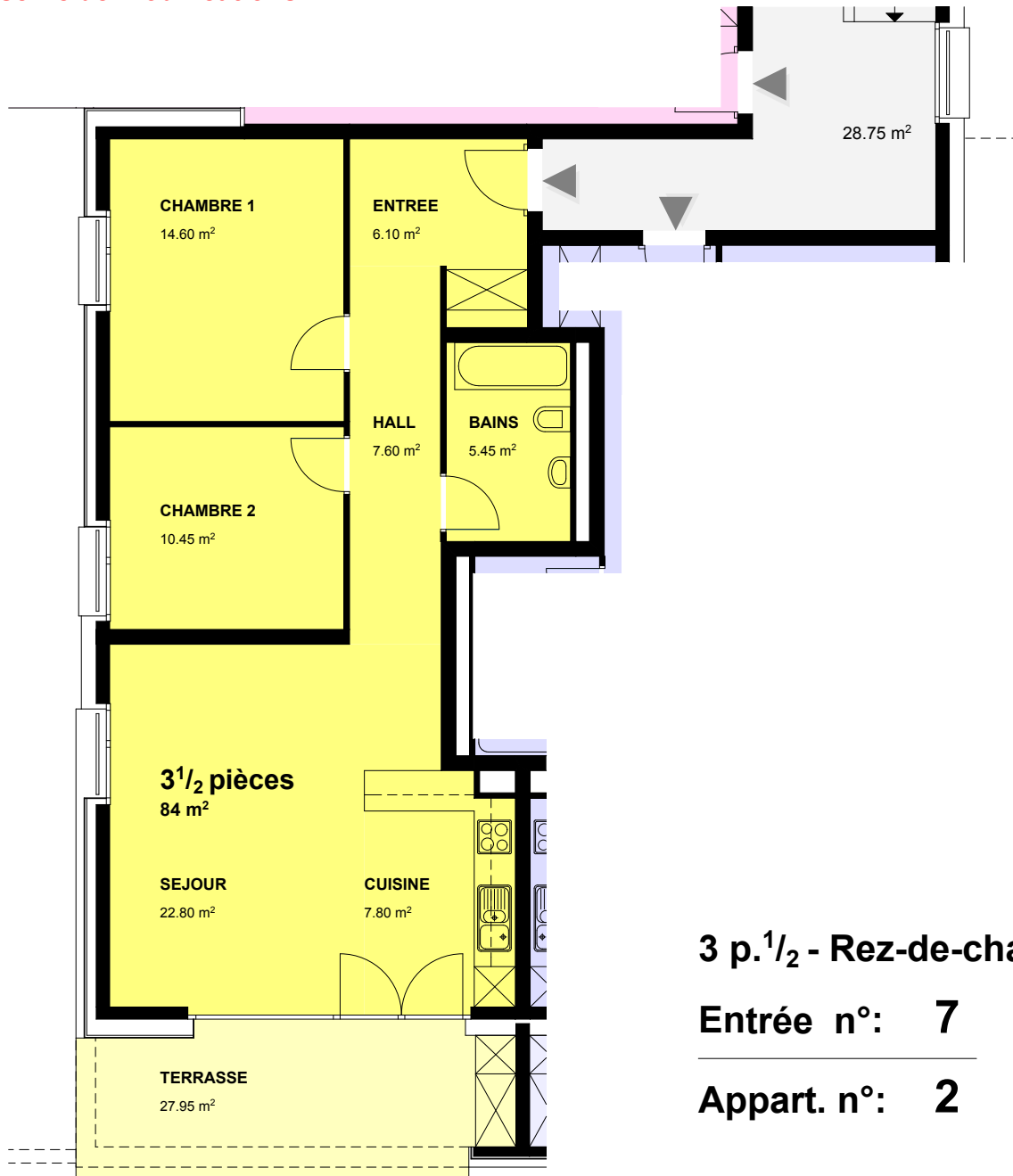


Immeuble **GRANDSON 7-13**
Commune **YVERDON-LES-BAINS**

District **JURA - NORD VD**
Parcelle **2417 - 2419**

8790

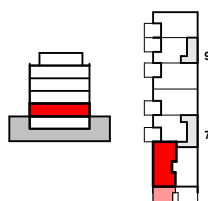
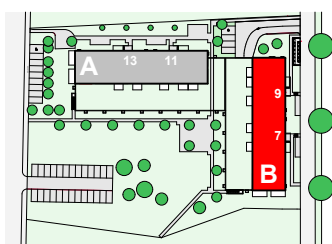
sous réserve de modifications



3 p. 1/2 - Rez-de-chaussée

Entrée n°: 7

Appart. n°: 2



Surfaces et volumes

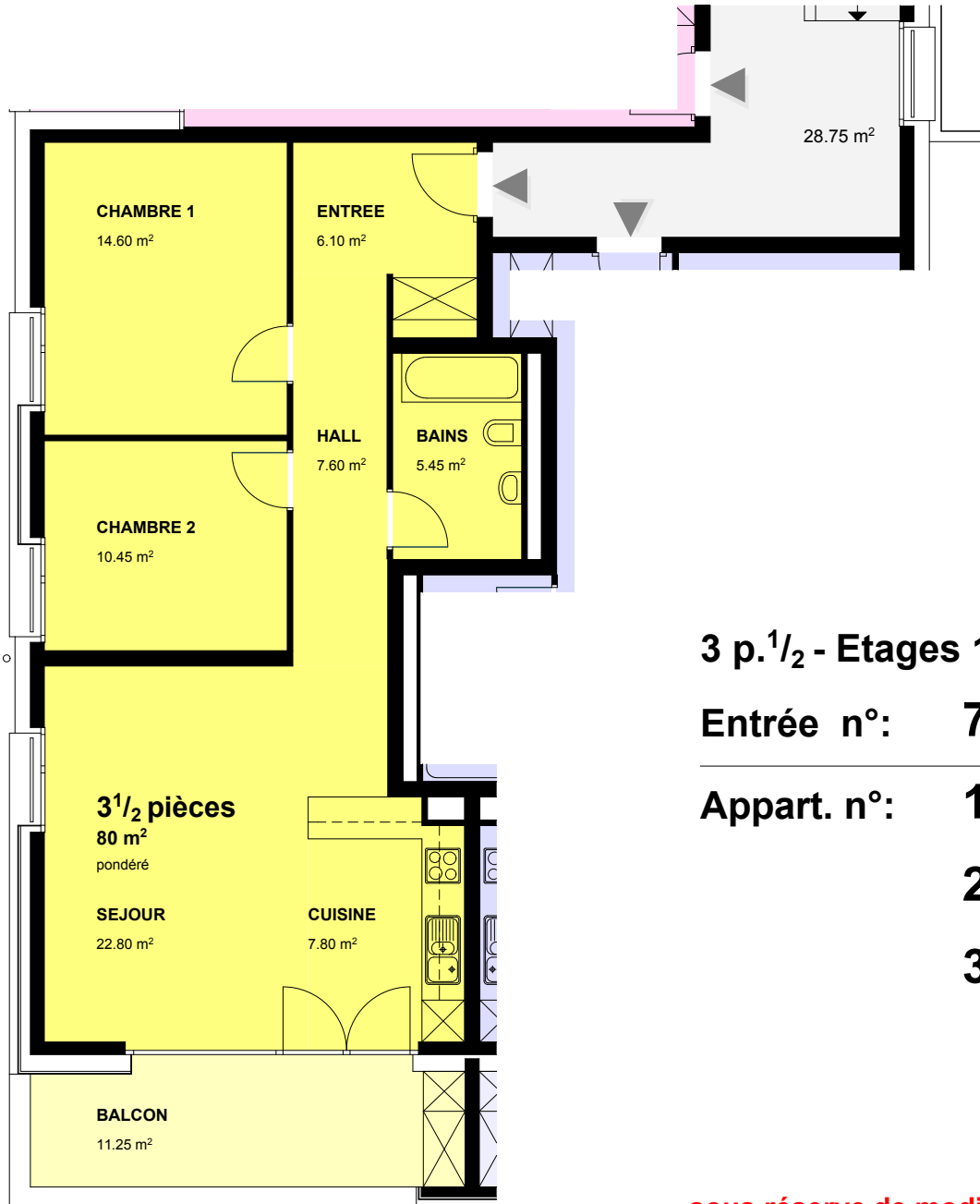
SIA	74.80 m ²
Terrasse	27.95 m ²
Pondéré	84 m²
Chauffé	180 m ³
USPI	78.10 m ²



Immeuble **GRANDSON 7-13**
Commune **YVERDON-LES-BAINS**

District **JURA - NORD VD**
Parcelle **2417 - 2419**

8790



3 p.^{1/2} - Etages 1,2 et 3

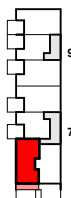
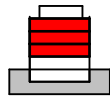
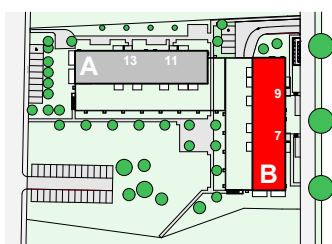
Entrée n°: 7

Appart. n°: 102

202

302

sous réserve de modifications



Surfaces et volumes

SIA	74.80 m ²
Balcon	11.25 m ²
Pondéré	80 m²
Chauffé	180 m ³
USPI	78.10 m ²



Immeuble **GRANDSON 7-13**
Commune **YVERDON-LES-BAINS**

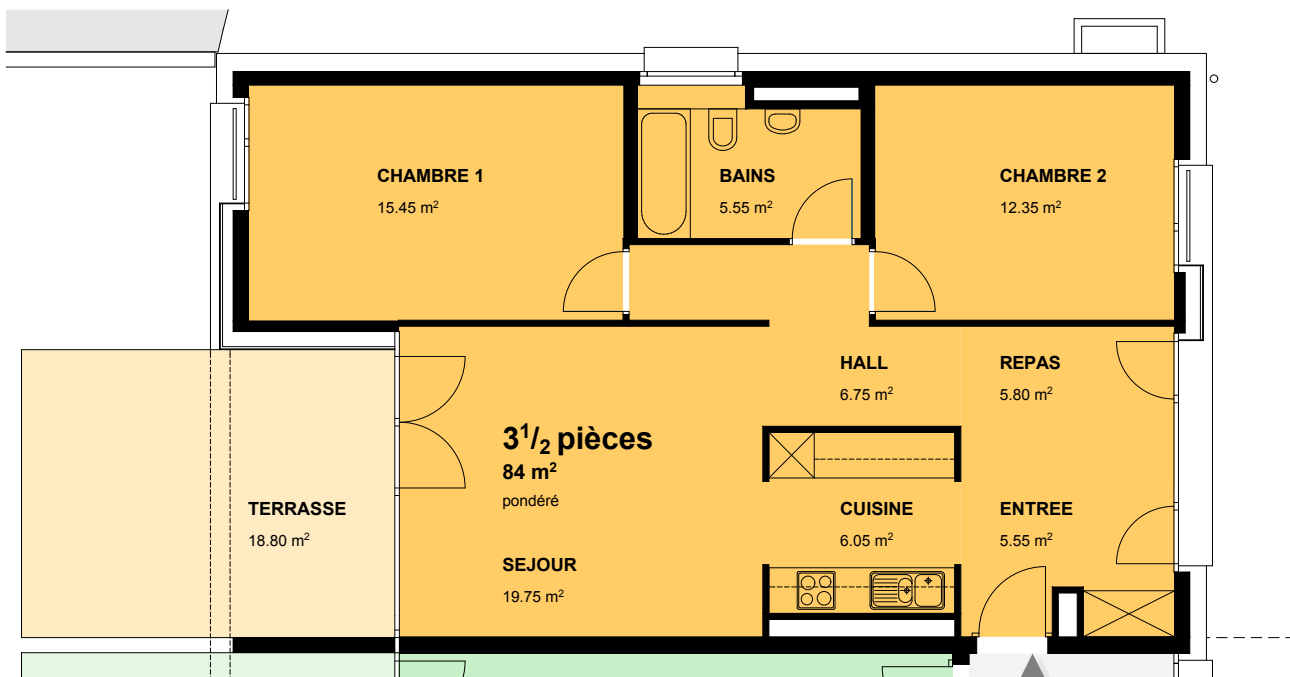
District **JURA - NORD VD**
Parcelle **2417 - 2419**

8790

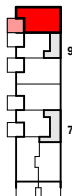
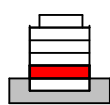
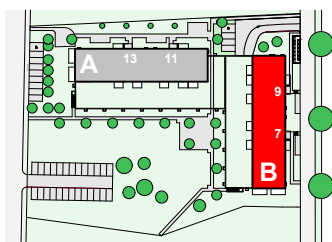
3 p.^{1/2} - Rez-de-chaussée

Entrée n°: 9

Appart. n°: 3



sous réserve de modifications



Surfaces et volumes

SIA	77.25 m ²
Terrasse	18.80 m ²
Pondéré	84 m²
Chauffé	185 m ³
USPI	81.15 m ²



Immeuble **GRANDSON 7-13**
Commune **YVERDON-LES-BAINS**

District **JURA - NORD VD**
Parcelle **2417 - 2419**

8790

3 p.^{1/2} - Etages 1,2 et 3

Entrée n°: 9

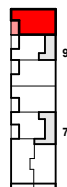
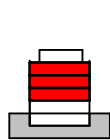
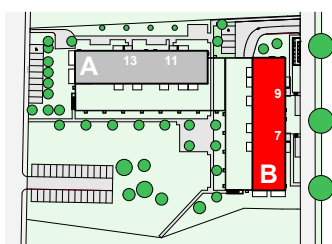
Appart. n°: 103

203

303



sous réserve de modifications



Surfaces et volumes

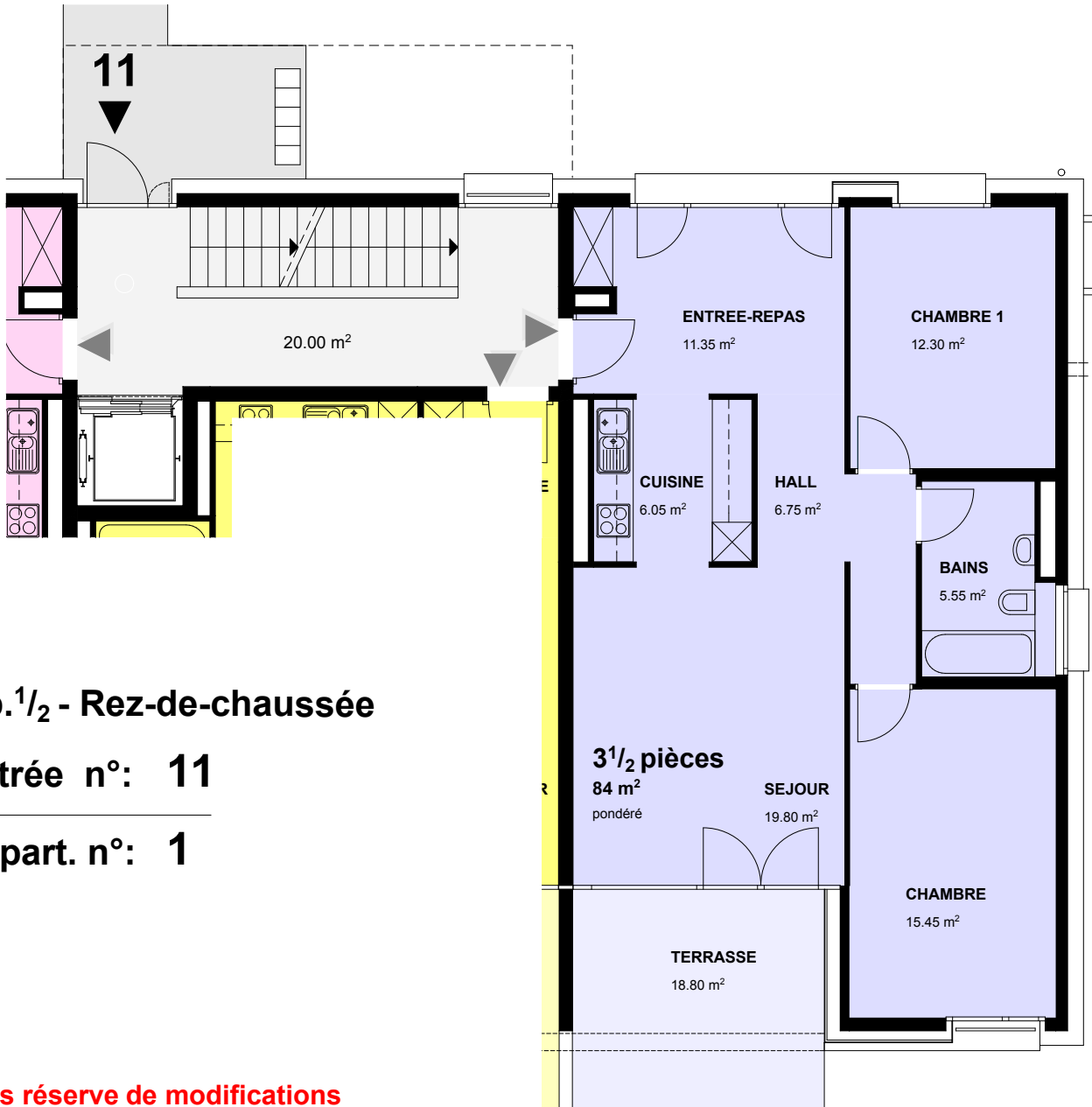
SIA	77.30 m ²
Balcon	8.20 m ²
Pondéré	81 m²
Chauffé	186 m ³
USPI	81.15 m ²



Immeuble **GRANDSON 7-13**
Commune **YVERDON-LES-BAINS**

District **JURA - NORD VD**
Parcelle **2417 - 2419**

8790

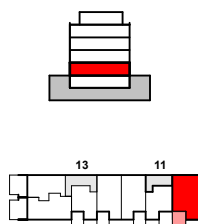
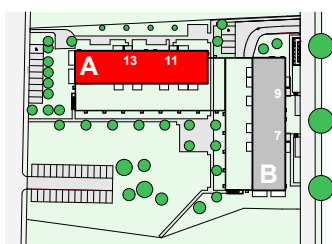


3 p.^{1/2} - Rez-de-chaussée

Entrée n°: 11

Appart. n°: 1

sous réserve de modifications



Surfaces et volumes

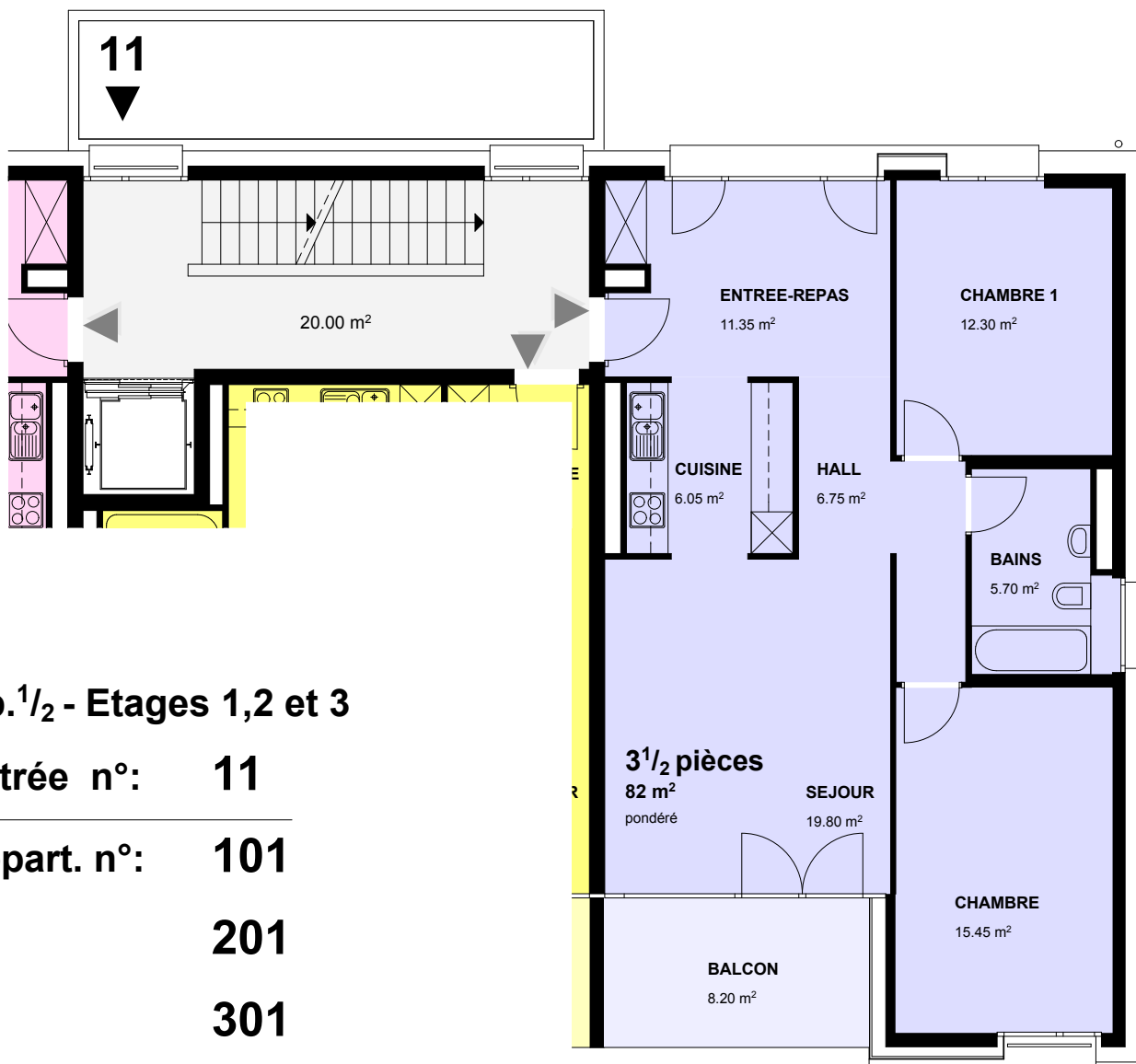
SIA	77.40 m ²
Terrasse	18.80 m ²
Pondéré	84 m²
Chauffé	186 m ³
USPI	81.15 m ²



Immeuble **GRANDSON 7-13**
Commune **YVERDON-LES-BAINS**

District **JURA - NORD VD**
Parcelle **2417 - 2419**

8790



3 p.^{1/2} - Etages 1,2 et 3

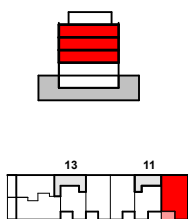
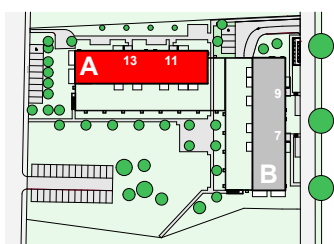
Entrée n°: 11

Appart. n°: 101

201

301

sous réserve de modifications



Surfaces et volumes

SIA	77.40 m ²
Balcon	8.20 m ²
Pondéré	82 m²
Chauffé	186 m ³
USPI	81.15 m ²



Immeuble **GRANDSON 7-13**
Commune **YVERDON-LES-BAINS**

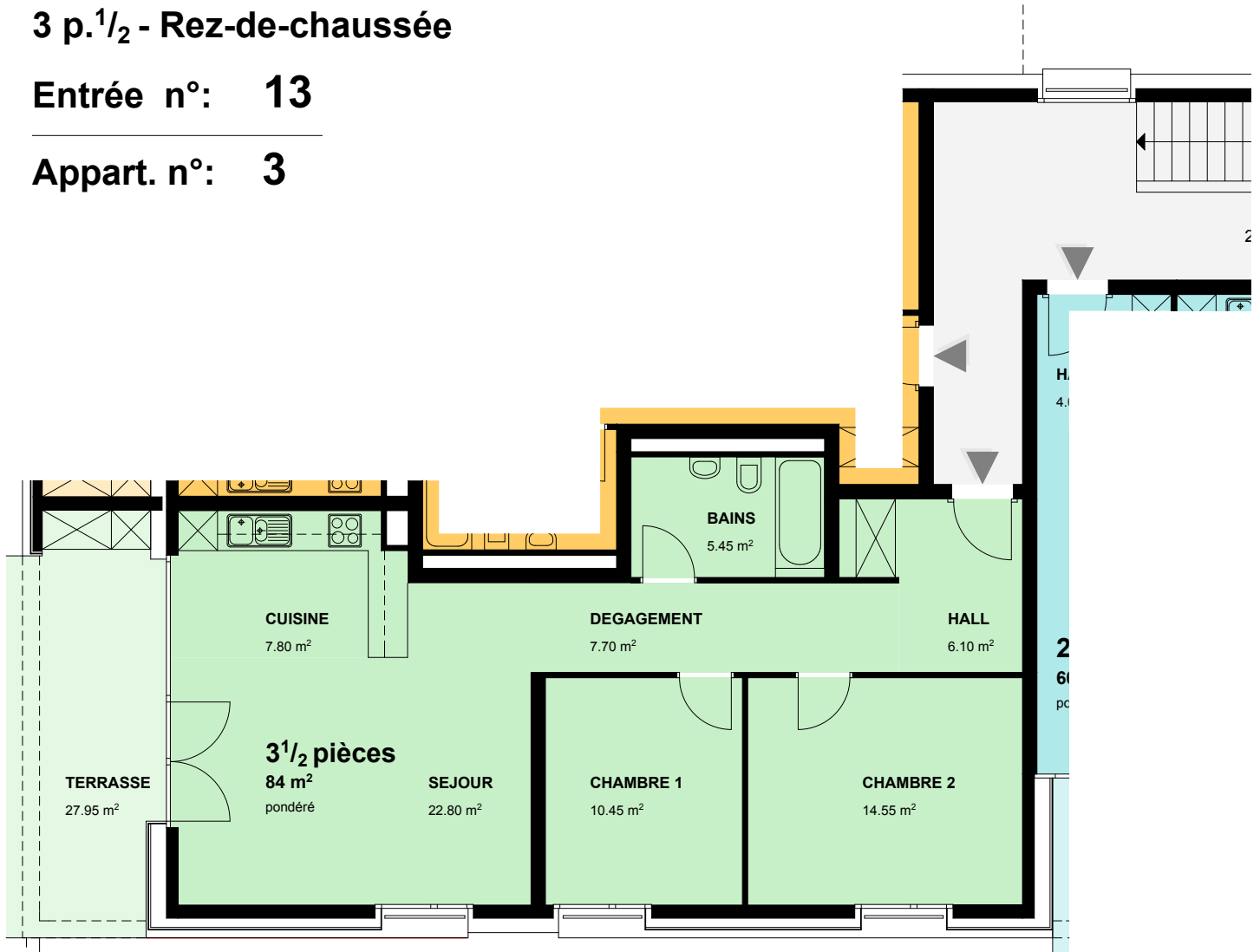
District **JURA - NORD VD**
Parcelle **2417 - 2419**

8790

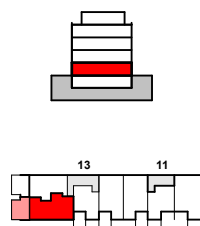
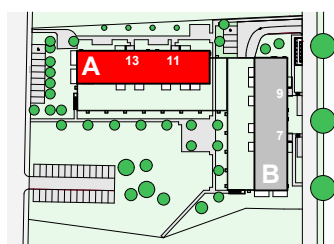
3 p.^{1/2} - Rez-de-chaussée

Entrée n°: 13

Appart. n°: 3



sous réserve de modifications



Surfaces et volumes

SIA	74.85 m ²
Terrasse	27.95 m ²
Pondéré	84 m²
Chauffé	180 m ³
USPI	78.10 m ²



Immeuble **GRANDSON 7-13**
Commune **YVERDON-LES-BAINS**

District **JURA - NORD VD**
Parcelle **2417 - 2419**

8790

3 p.^{1/2} - Etages 1,2 et 3

Entrée n°: 13

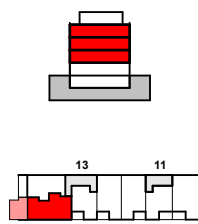
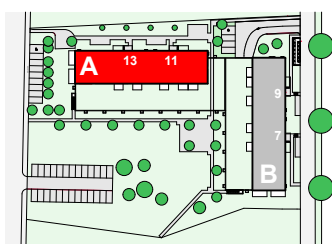
Appart. n°: 103

203

303



sous réserve de modifications



Surfaces et volumes

SIA	74.85 m ²
Balcon	11.25 m ²
Pondéré	80 m²
Chauffé	180 m ³
USPI	78.10 m ²



0 1 m 5 m