

Immeuble **GRANDSON 7-13**
Commune **YVERDON-LES-BAINS**

District **JURA - NORD VD**
Parcelle **2417 - 2419**

8790

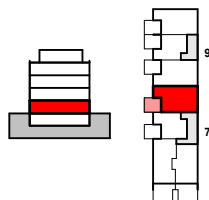
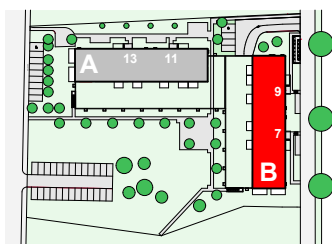


3 p.^{1/2} - Rez-de-chaussée

Entrée n°: 7

Appart. n°: 4

sous réserve de modifications



Surfaces et volumes

SIA	76.65 m ²
Terrasse	17.80 m ²
Pondéré	83 m²
Chauffé	184 m ³
USPI	80.90 m ²



Immeuble **GRANDSON 7-13**
Commune **YVERDON-LES-BAINS**

District **JURA - NORD VD**
Parcelle **2417 - 2419**

8790



3 p.^{1/2} - Etages 1,2 et 3

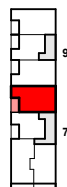
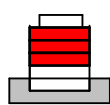
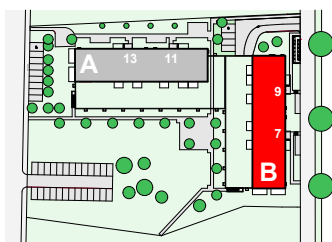
Entrée n°: 7

Appart. n°: 104

204

304

sous réserve de modifications



Surfaces et volumes

SIA	76.65 m ²
Balcon	7.65 m ²
Pondéré	80 m²
Chauffé	184 m ³
USPI	80.90 m ²



Immeuble **GRANDSON 7-13**
Commune **YVERDON-LES-BAINS**

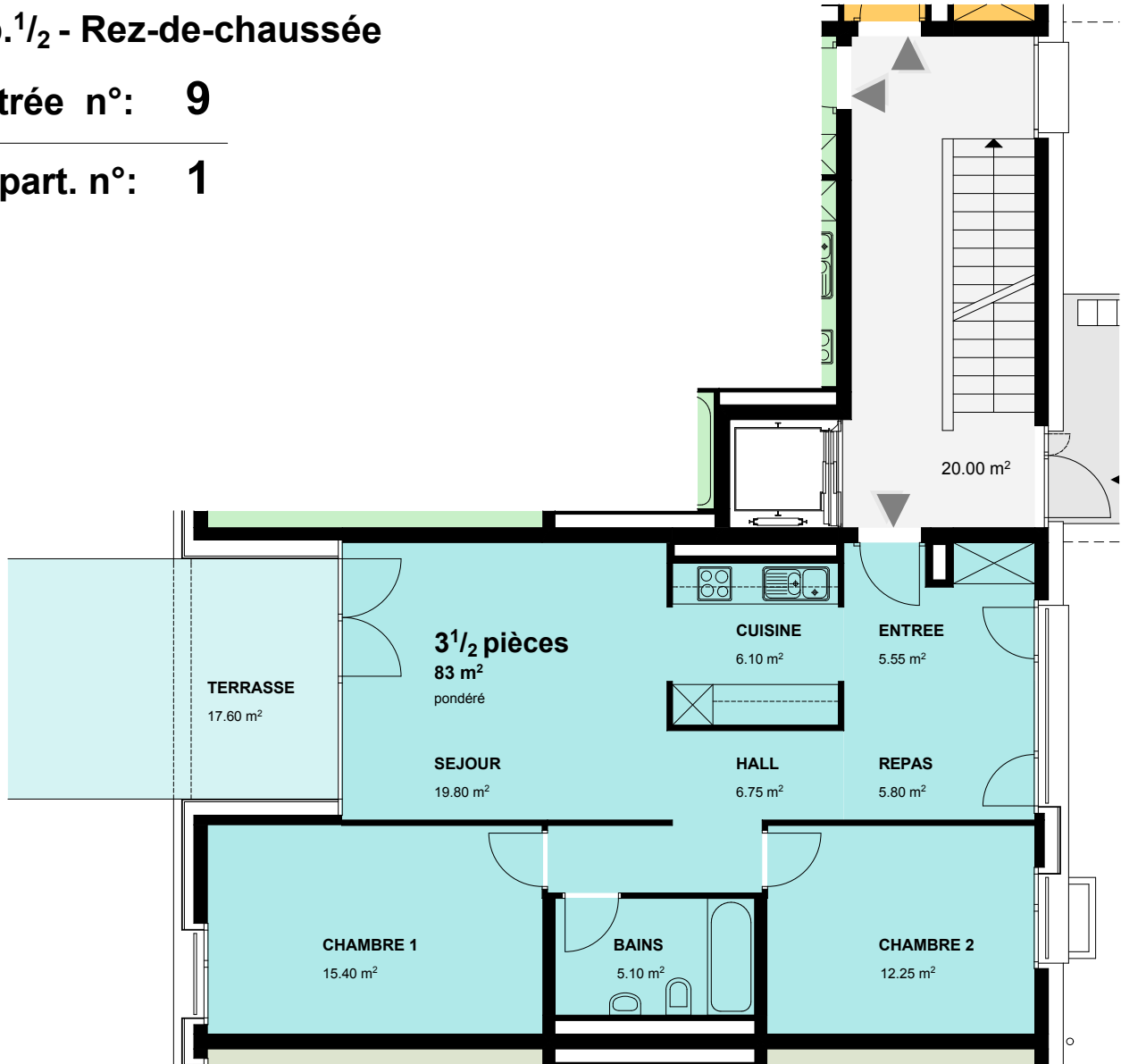
District **JURA - NORD VD**
Parcelle **2417 - 2419**

8790

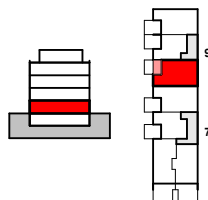
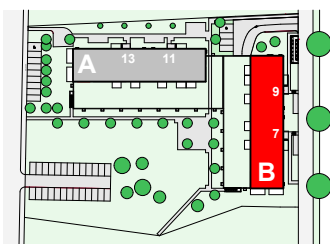
3 p.^{1/2} - Rez-de-chaussée

Entrée n°: 9

Appart. n°: 1



sous réserve de modifications



Surfaces et volumes

SIA	76.75 m ²
Terrasse	17.60 m ²
Pondéré	83 m²
Chauffé	184 m ³
USPI	80.85 m ²



Immeuble **GRANDSON 7-13**
Commune **YVERDON-LES-BAINS**

District **JURA - NORD VD**
Parcelle **2417 - 2419**

8790

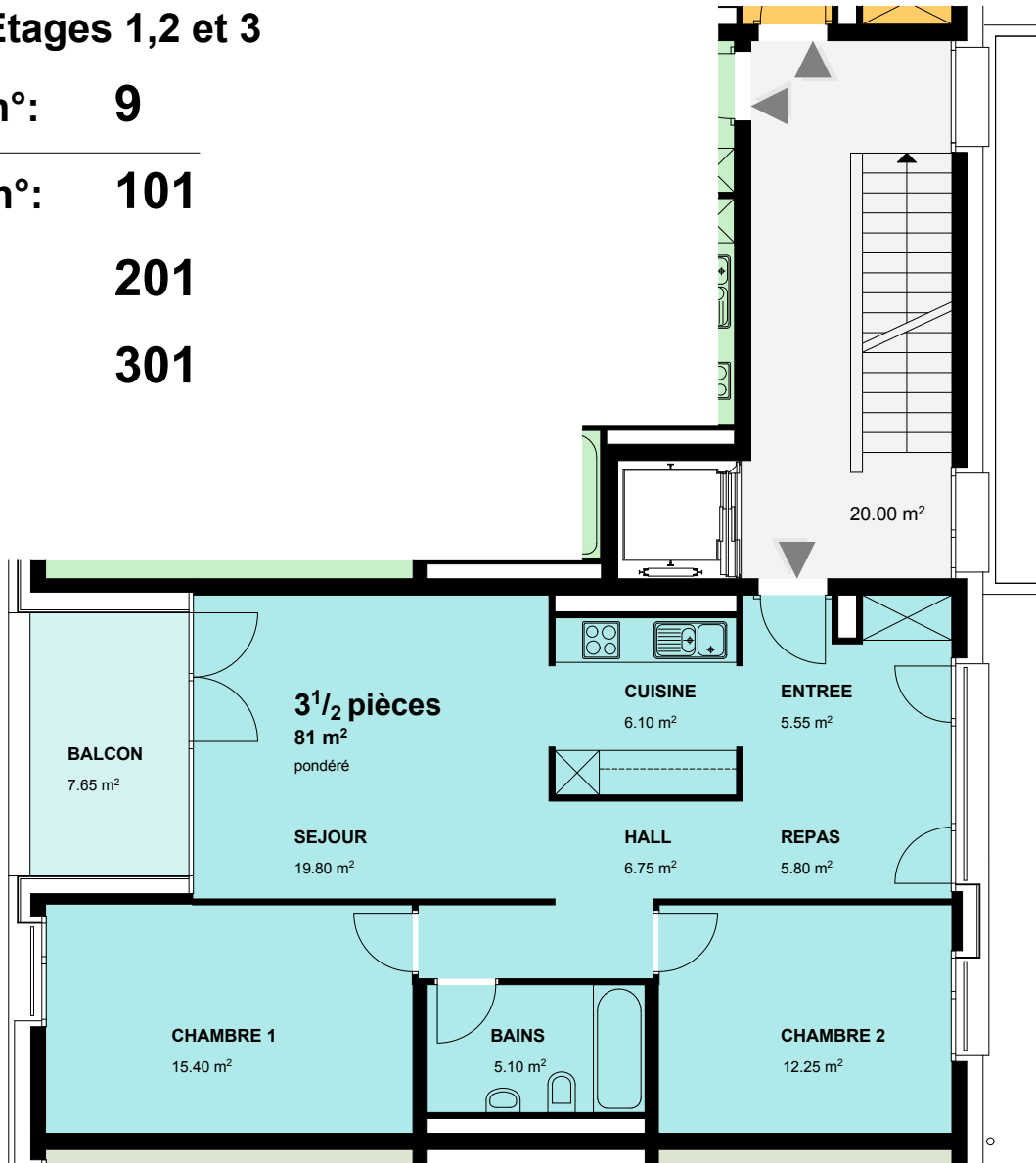
3 p.^{1/2} - Etages 1,2 et 3

Entrée n°: 9

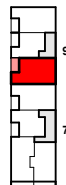
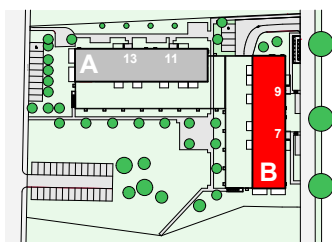
Appart. n°: 101

201

301



sous réserve de modifications



Surfaces et volumes

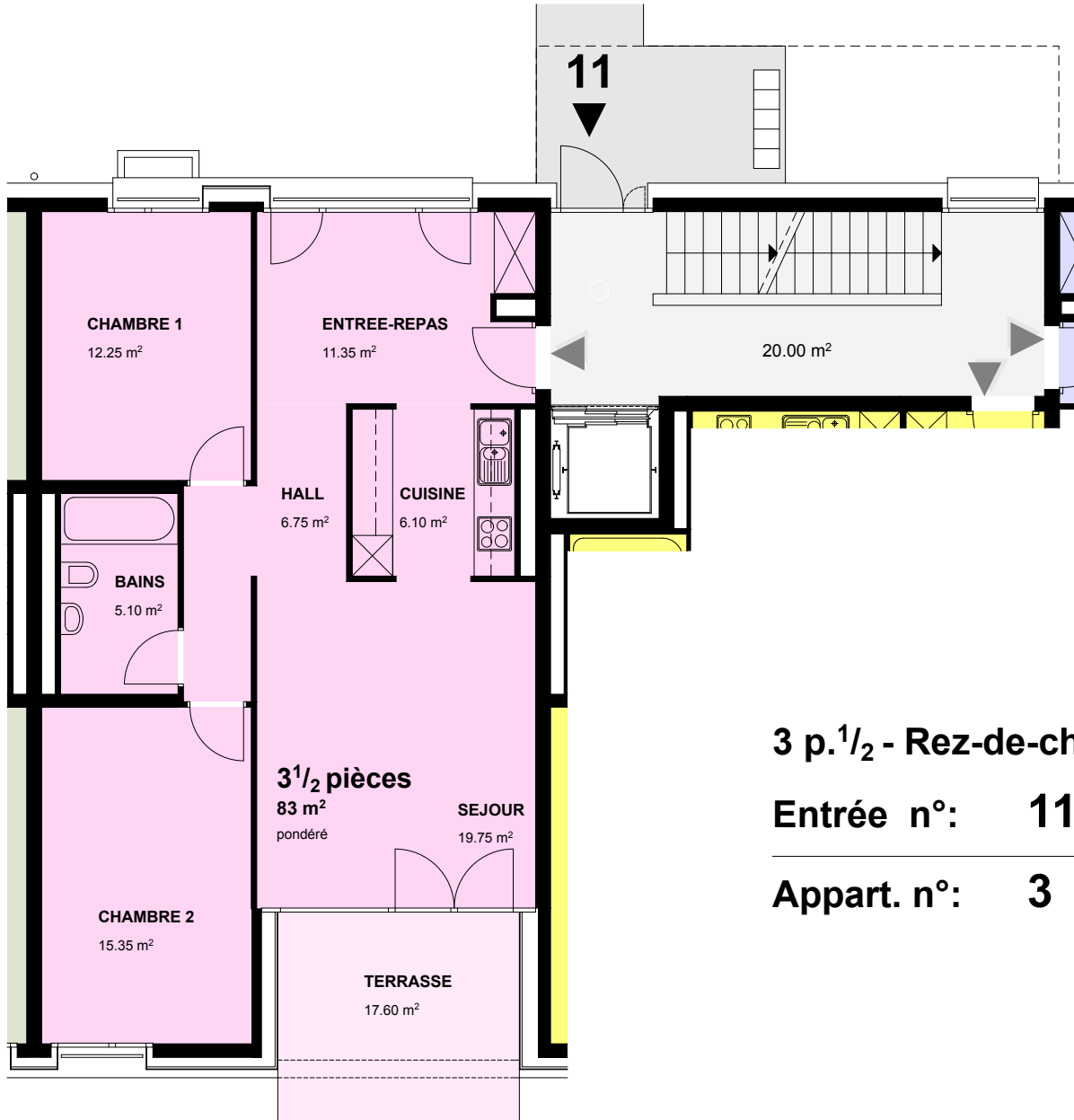
SIA	76.75 m ²
Balcon	7.70 m ²
Pondéré	81 m²
Chauffé	184 m ³
USPI	80.85 m ²



Immeuble **GRANDSON 7-13**
Commune **YVERDON-LES-BAINS**

District **JURA - NORD VD**
Parcelle **2417 - 2419**

8790

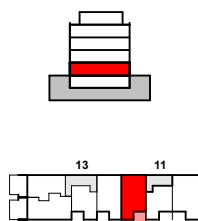
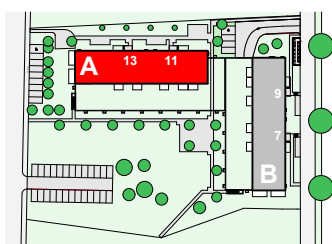


3 p.^{1/2} - Rez-de-chaussée

Entrée n°: 11

Appart. n°: 3

sous réserve de modifications



Surfaces et volumes

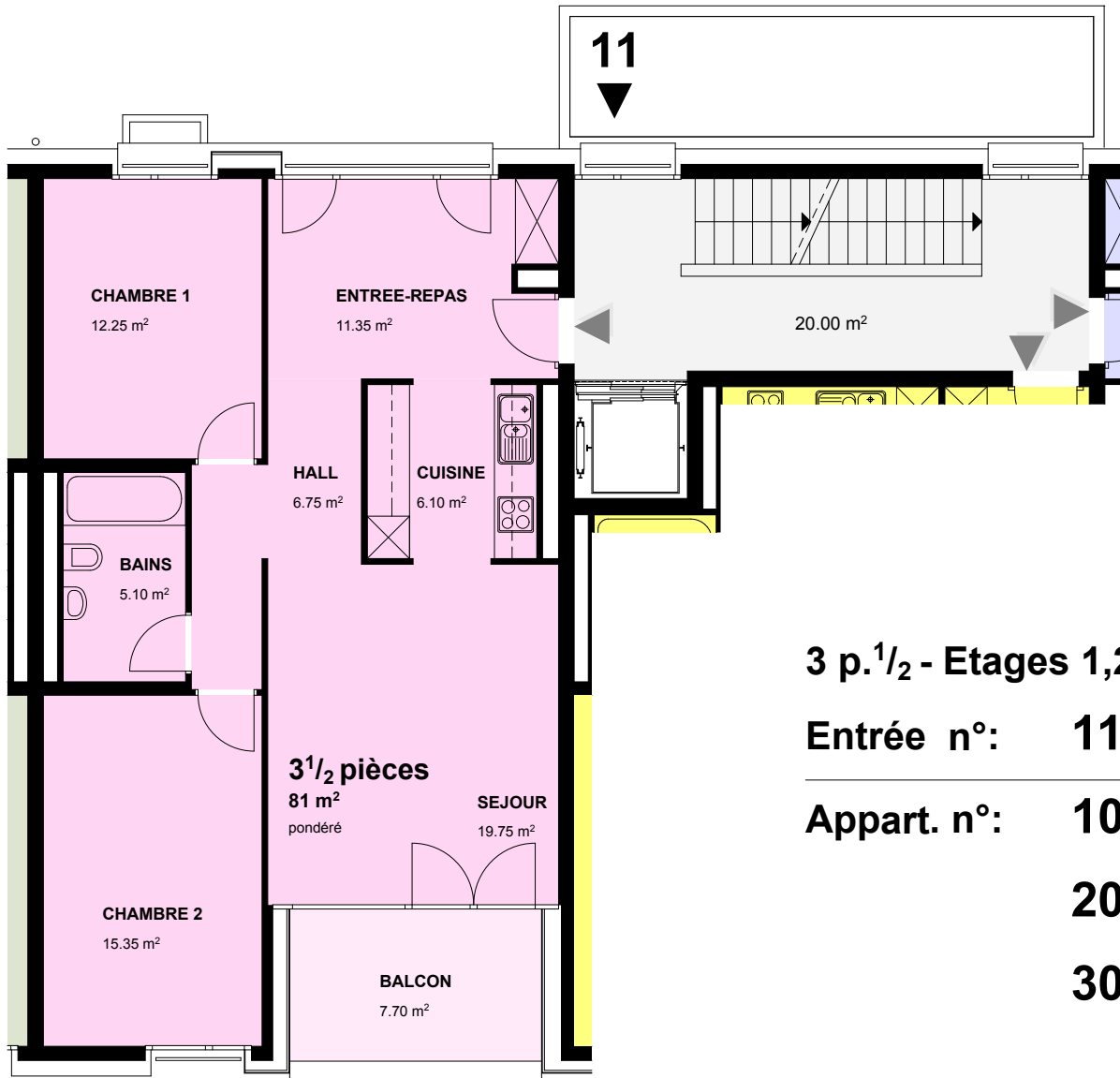
SIA	76.65 m ²
Terrasse	17.60 m ²
Pondéré	83 m²
Chauffé	184 m ³
USPI	80.85 m ²



Immeuble **GRANDSON 7-13**
Commune **YVERDON-LES-BAINS**

District **JURA - NORD VD**
Parcelle **2417 - 2419**

8790



3 p.^{1/2} - Etages 1,2 et 3

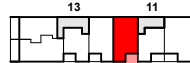
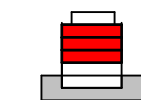
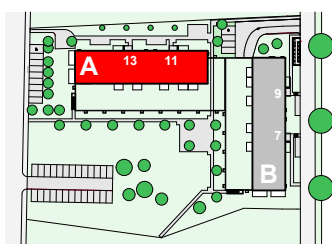
Entrée n°: 11

Appart. n°: 103

203

303

sous réserve de modifications



Surfaces et volumes

SIA	76.65 m ²
Balcon	7.70 m ²
Pondéré	81 m²
Chauffé	184 m ³
USPI	80.85 m ²



Immeuble **GRANDSON 7-13**
Commune **YVERDON-LES-BAINS**

District **JURA - NORD VD**
Parcelle **2417 - 2419**

8790

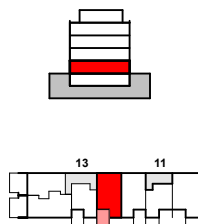
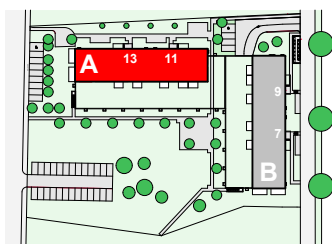


3 p.^{1/2} - Rez-de-chaussée

Entrée n°: 13

Appart. n°: 1

sous réserve de modifications



Surfaces et volumes

SIA	76.60 m ²
Terrasse	17.80 m ²
Pondéré	83 m²
Chauffé	184 m ³
USPI	80.90 m ²



Immeuble **GRANDSON 7-13**
Commune **YVERDON-LES-BAINS**

District **JURA - NORD VD**
Parcelle **2417 - 2419**

8790



3 p.^{1/2} - Etages 1,2 et 3

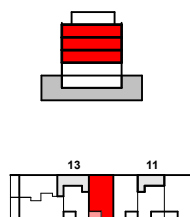
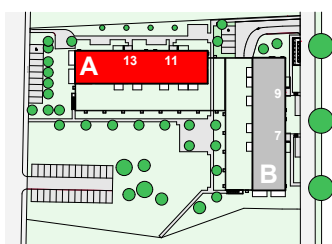
Entrée n°: 13

Appart. n°: 101

201

301

sous réserve de modifications



Surfaces et volumes

SIA	76.60 m ²
Balcon	7.70 m ²
Pondéré	80 m²
Chauffé	184 m ³
USPI	80.90 m ²



0 1 m 5 m